

Customer :

customer

Customer part :

customer part

Comment :

Comment

S1=2.72

S2=3.75

Tmax=458

Tp S2=497.0

PI=0.42

HI=114

Sample =1641.10

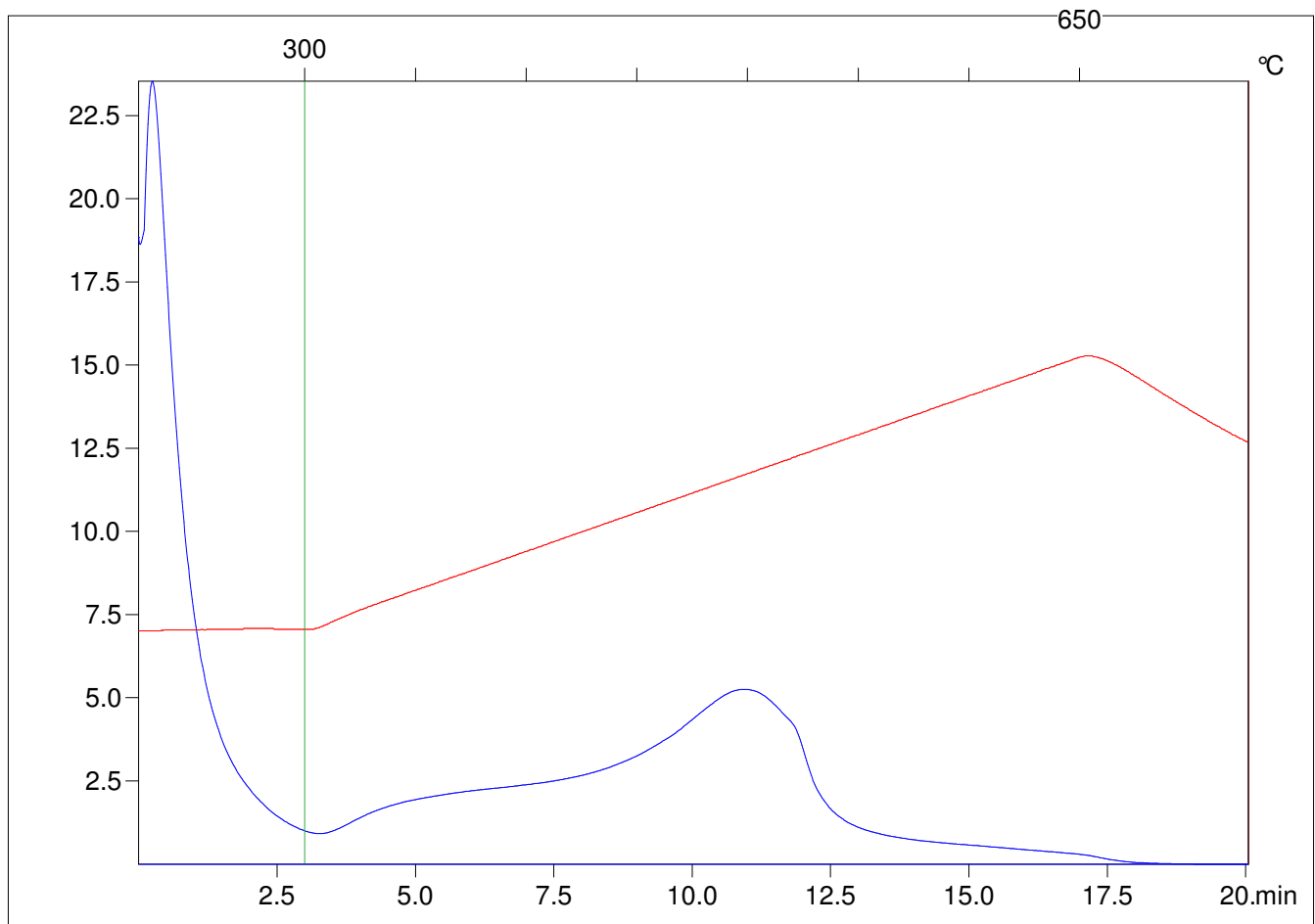
Method =Bulk Rock

Cycle=Basic

KFID(10*9)=1444

Qty =70.2

TOC=3.28



C:\VINCI\PK1792\PK045.R00 : FID pyrolysis graphic

State

Pyro Status

Oxi Status